

A54812-SW 48-Port SAS Switch

The following files are included in the zip file:

- | | |
|------------------------------------|--|
| • Readme First.PDF | This document |
| • sas3x48SdmC1-12.00.XXX.bundle.fw | The firmware file to be downloaded |
| • sdmgui_8u40_021.jar | The SDM GUI (use with JAVA) |
| • sdmDownload.ttl | TeraTerm script to download the firmware |
| • astek-sasA54812.309.mib | SNMP mib file, only needed if you are using a SNMP Manager |

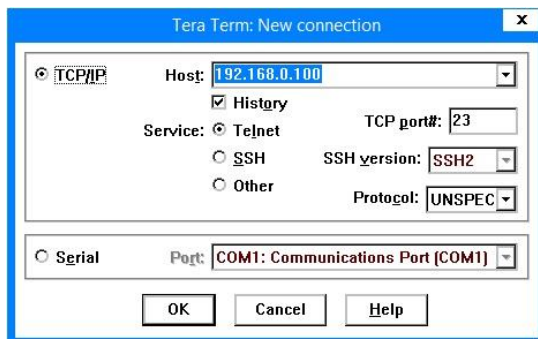
Which method to use to upgrade Firmware

If the switch firmware is 8.0.2.63 or later than use the SDM GUI to download the latest firmware.

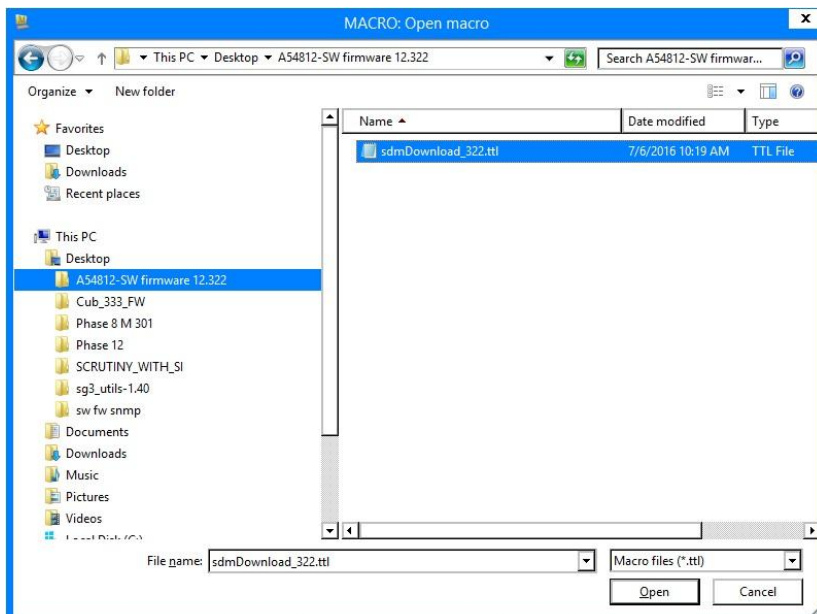
If the switch firmware is older than 8.0.2.63 than use the TeraTerm script to download the latest firmware.

How to upgrade Firmware using the TeraTerm Script

1. Connect the switch to your local area network through the Ethernet connector on the front of the chassis, and verify that the PC is properly configured to see the switch through the LAN connection.
2. Run TeraTerm (ver 4.75 or later) as **administrator**
3. Click on “File” then “New connection”, type in the IP address of the switch into the “Host” box (default is 192.168.0.100), make sure that the TCP/IP and Telnet buttons are checked.



4. Click on “Control” then “Macro” on the TeraTerm window
 - Select “sdmDownload.ttl” macro file from the Macro:Open macro window, then click “open”



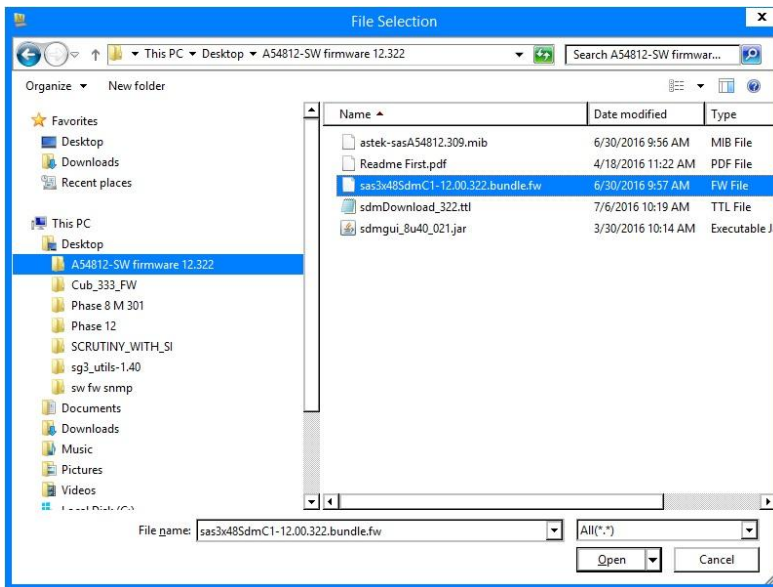
A54812-SW 48-Port SAS Switch

- If the below dialog box appears type in the IP address of the switch (default is 192.168.0.100) then click “OK”.

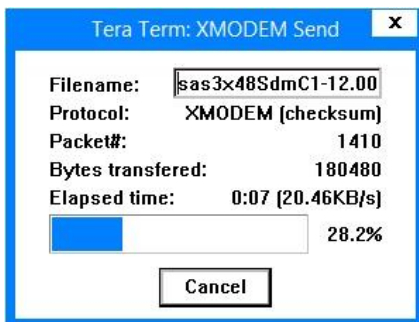
This may happen on some firmware.



- Select the firmware file to download in the File select window, then click “open”



- Wait until the sdm.ttl script file has finished



- Click “OK” on the Download Completed box

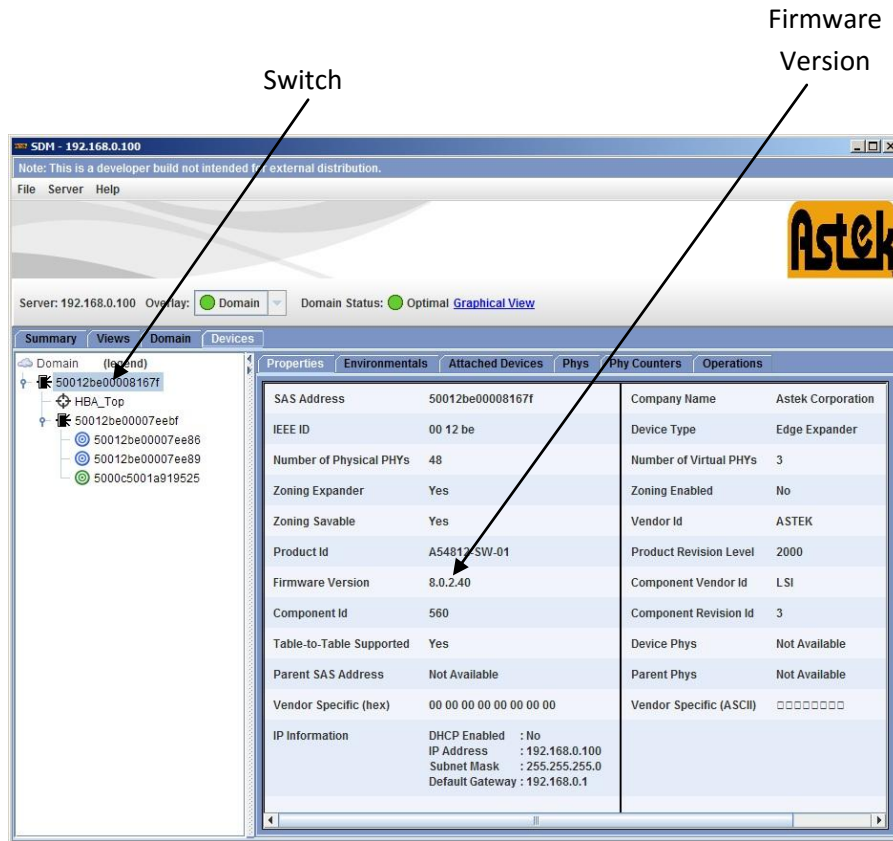


- The switch Firmware has been upgraded. To check the version, use the SDM GUI.

- Click on the “Device” tab
- Click on the switch in the topology diagram
- Check the firmware version.

A54812-SW 48-Port SAS Switch

Refer to the *A54812-SW SAS Switch User Guide* for information on how to use the SDM-GUI interface.



How to upgrade Firmware using the SDM GUI

1. Click on the "Device" tab
2. Click on the switch in the topology diagram
3. Click on the "Operation" tab
4. Click on "Download Firmware"
5. Select the Firmware file by browsing
6. After the reset the switch firmware has been upgraded
7. Restart the SDM GUI and check the firmware reversion
8. See step 8 in the TeraTerm script section.